

SCHEDULE OF FASTENINGS

PLANKING TO PLANKING TOPSIDES	COPPER BOAT NAILS 1 1/2" LG. CLENCHED ON 1/4" ROOVES	SIDE ARMOUR TO GUNWALES	GALV. M.S. BOLTS 1/2" DIA. CSK. HEADS
BOTTOM	1 1/2" LG.	TO WOOD PADS	2 1/2" LG.
DECK PLANKING TO DECK PLANKING	1" x 1 3/8"	BUTTSTRAPS	1 1/2" x 3/8"
PLANKING TO BENT TIMBERS	2 1/2" x 1 1/2" CLENCHED ON 1/4" ROOVES	SHELF	7" x 3/8"
PLANKING TO SAWN FRAMES TOPSIDES	IRON SCREWS 1 1/2" x 8 G	FORE & AFT ENDS THRO' CANT.	3 1/2" x 3/8"
BOTTOM	1 1/2" x 8 G	ANGLE BAR FLANGE	1 1/2" x 3/8"
PLYWOOD BRACKETS TO FRAMES	R 1/2" HP M. S. BOLTS & NUTS 1/2" DIA. WITH M.S. WASHER UNDER BOTH HEAD & NUT.	TO BEAM ENDS	GALV. M.S. BOLTS 1/2" x 3/8"
CHINE LUGS TO FRAMES	2" x 3/8"	ARMOUR BULK TO FLOORS	M.S. RH' BOLTS 1/2" x 3/8" DIA.
CHINE LUGS TO CHINES	CSK. HP	BEAMS	2" x 3/8"
SIDE KEELSONS TO BARKWALES	CSK. SMITHED HP GALV. BOLTS & NUTS 3/8" DIA. LENGTH TO BE TAKEN AT BOAT	ANGLE BAR FLANGE	2 1/2" x 3/8"
CENTRE KEELSON TO KEEL	3/8" DIA.	ARMOUR DECKS TO BEAMS	MILD STEEL RIVETS 3/8" DIA. SNAP HEADS.
CENTRE SLING PLATES	3/8" DIA.	COAMINGS	
DECK PLANKING TO BEAMS	IRON SCREWS 1 1/4" x 8 GAUGE	GUNWALES	
BOTTOM PLANKING TO HOG	COPPER BOAT NAILS 2 1/2" x 1 1/2" CLENCHED ON 1/4" ROOVES	LAPS	
FLOOR BOARDS TO FRAMES	IRON SCREWS 1 1/4" x 8 G		

ALC.s. NOW LCAs.

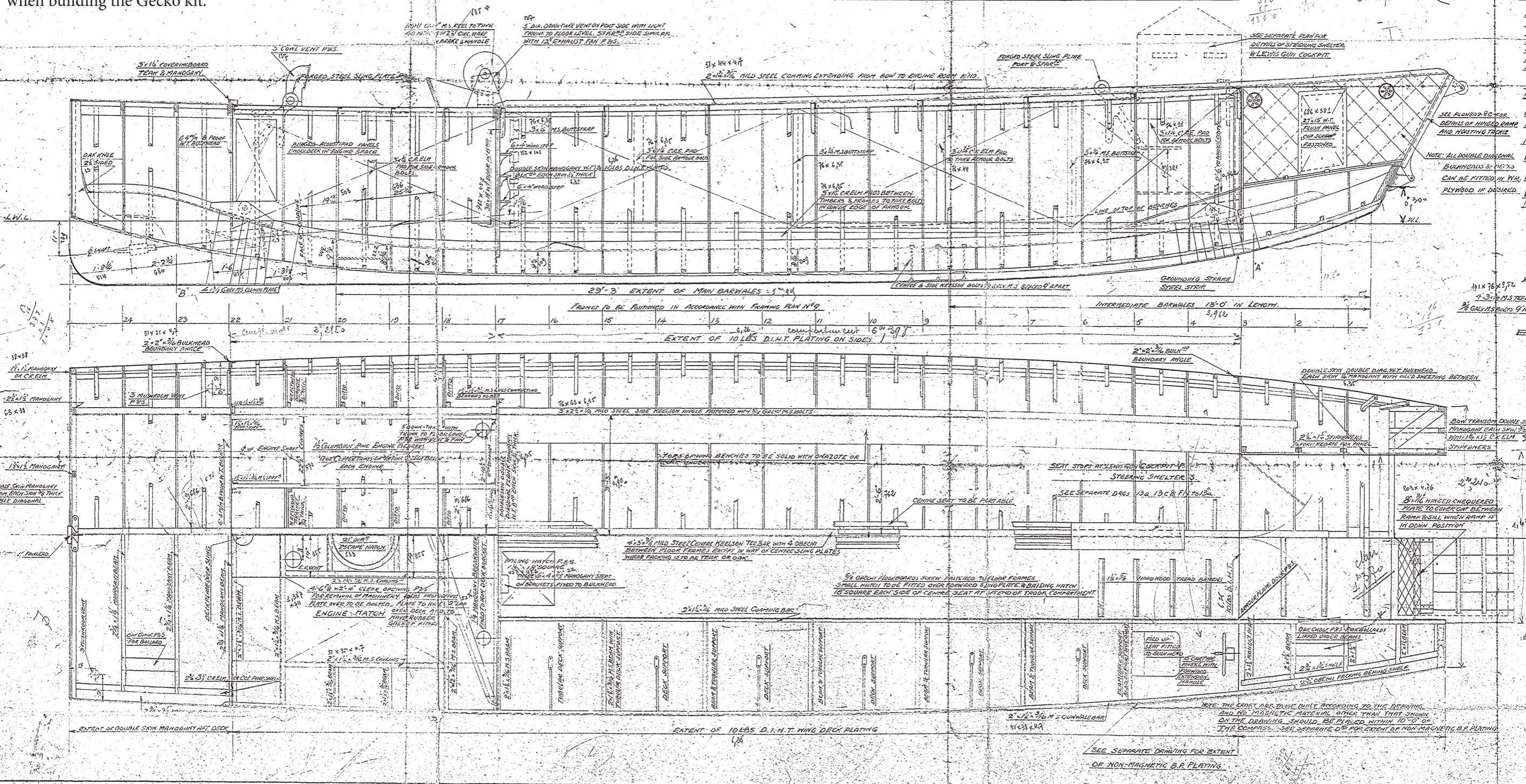
CONSTRUCTION PLAN.

SCALE: 3/4" = 1 FOOT.

Reduced to 1:35 scale for convenience when building the Gecko kit.

MIDS  
SC

DE





# ALC's NOW L.C.A.s.

702270  
L.C.A.s  
E.I.  
10

87 2  
16  
40 62  
67 3  
1 @ 8 3 2

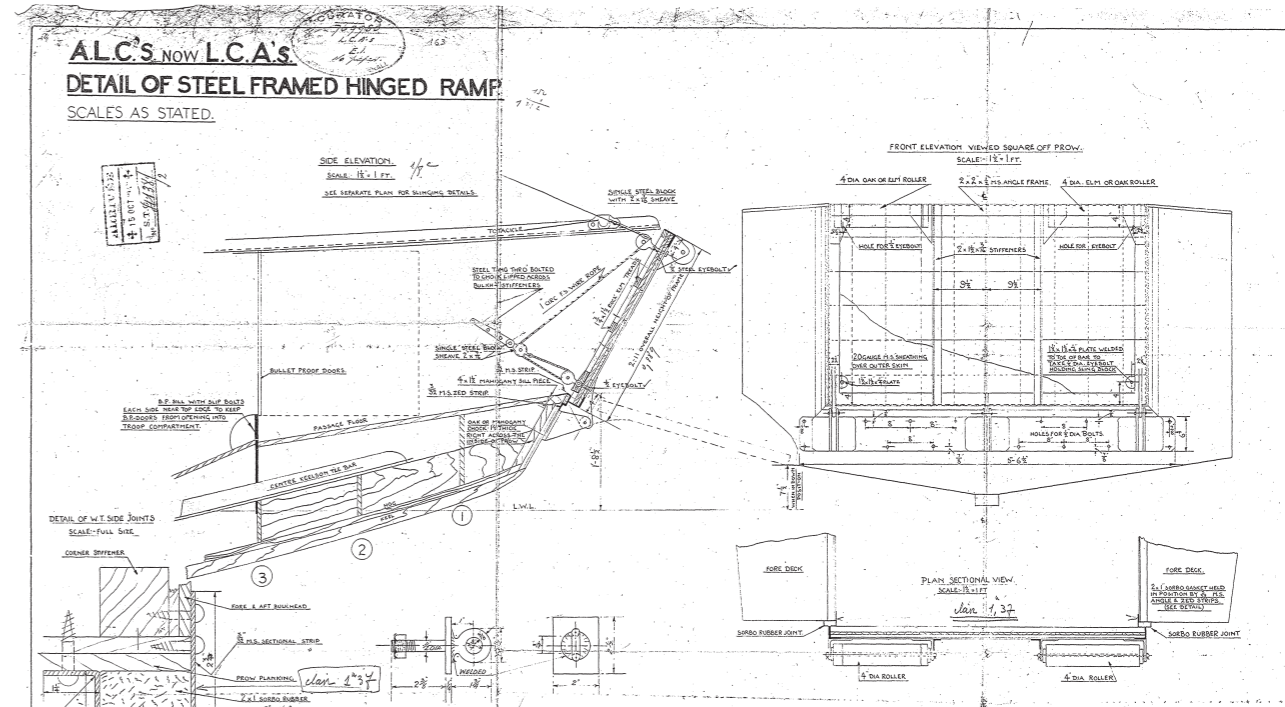
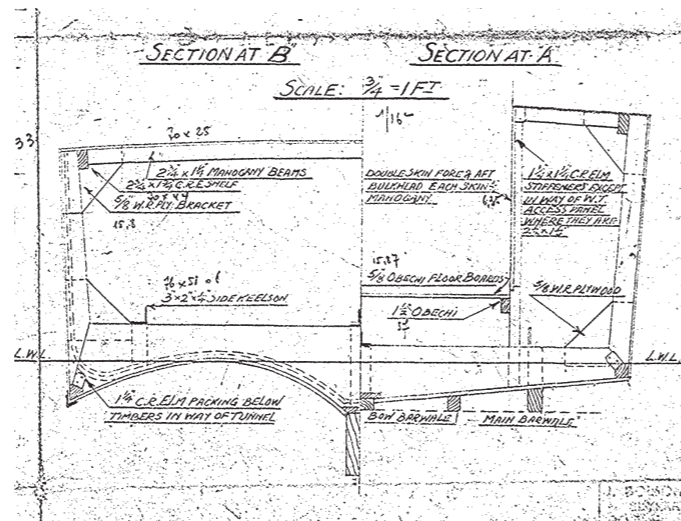
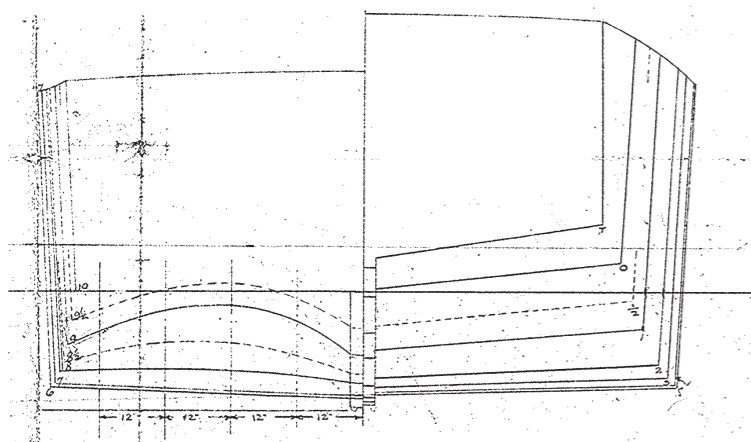
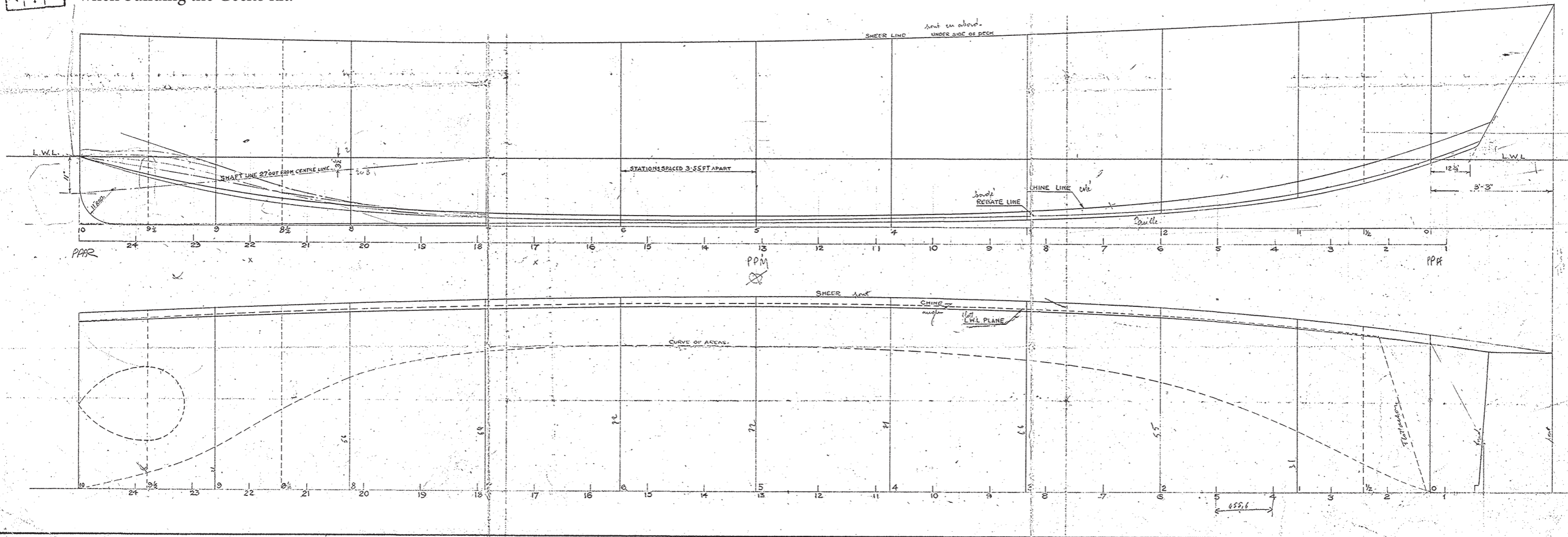
## LINES PLAN & OFFSETS. TO OUTSIDE AND INSIDE OF PLANK

156

ARRIVE  
+ 15 OCT 1944  
S.T. # 198

SCALE:  $\frac{3}{4}'' = 1 \text{ FOOT}$   $\frac{1}{16}''$

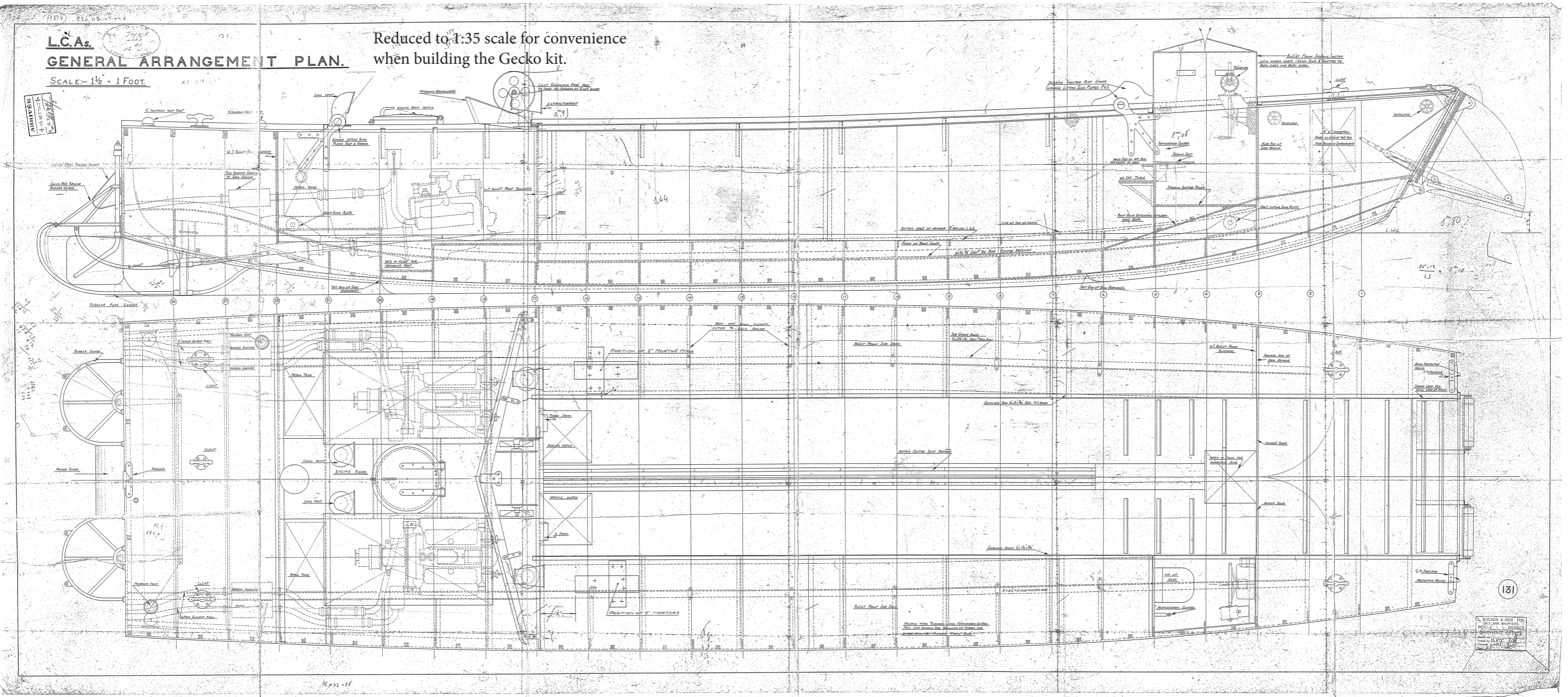
Reduced to 1:35 scale for convenience when building the Gecko kit.





L.C.A.s.  
**GENERAL ARRANGEMENT PLAN.**  
SCALE - 1/2" = 1 FOOT.

Reduced to 1:35 scale for convenience  
when building the Gecko kit.



1. SOLON B. BOSTON  
2. L.A.W. BOSTON  
3. P.O. BOX 100  
4. BOSTON, MASS.  
DRAWING OFFICE  
1917